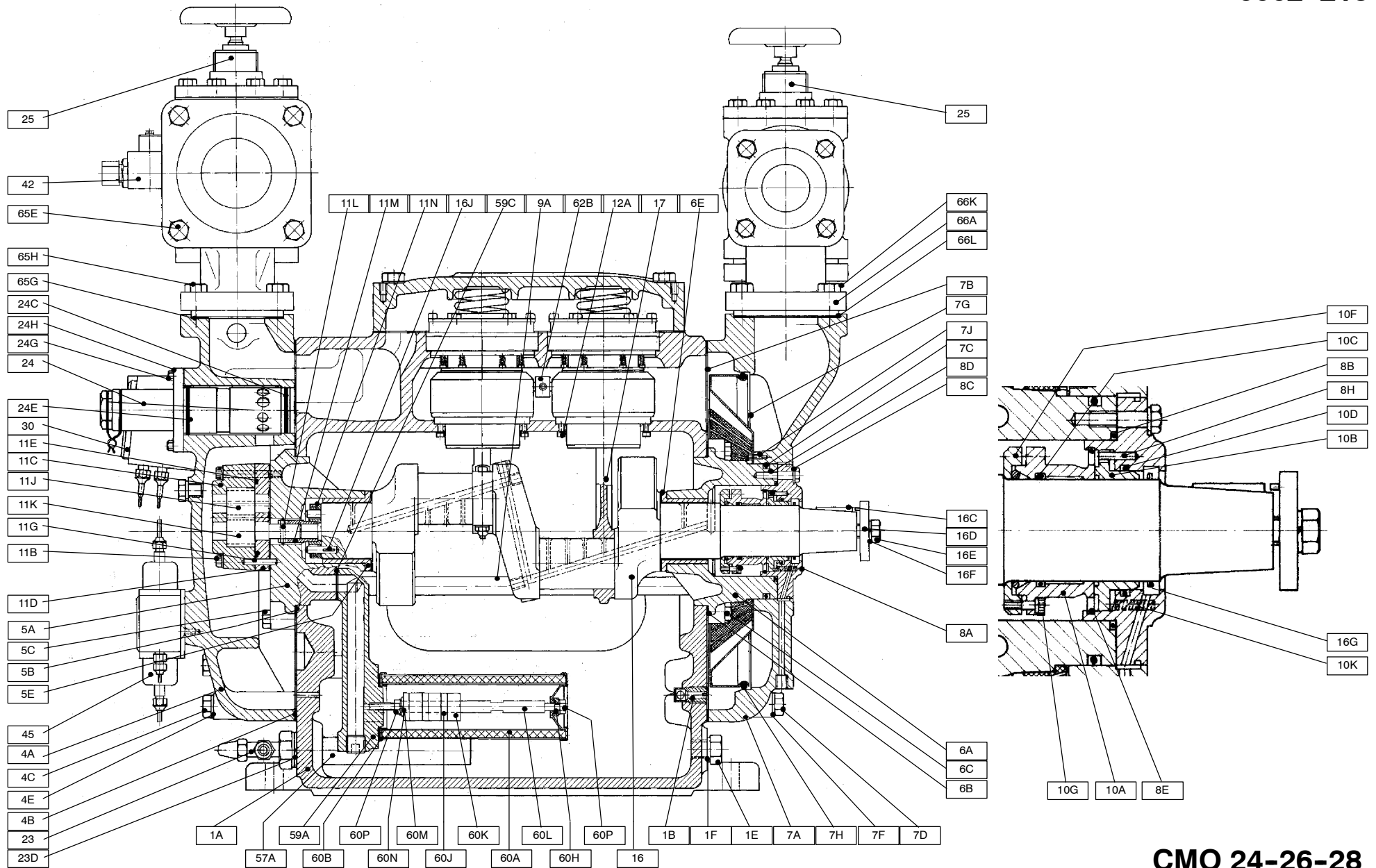


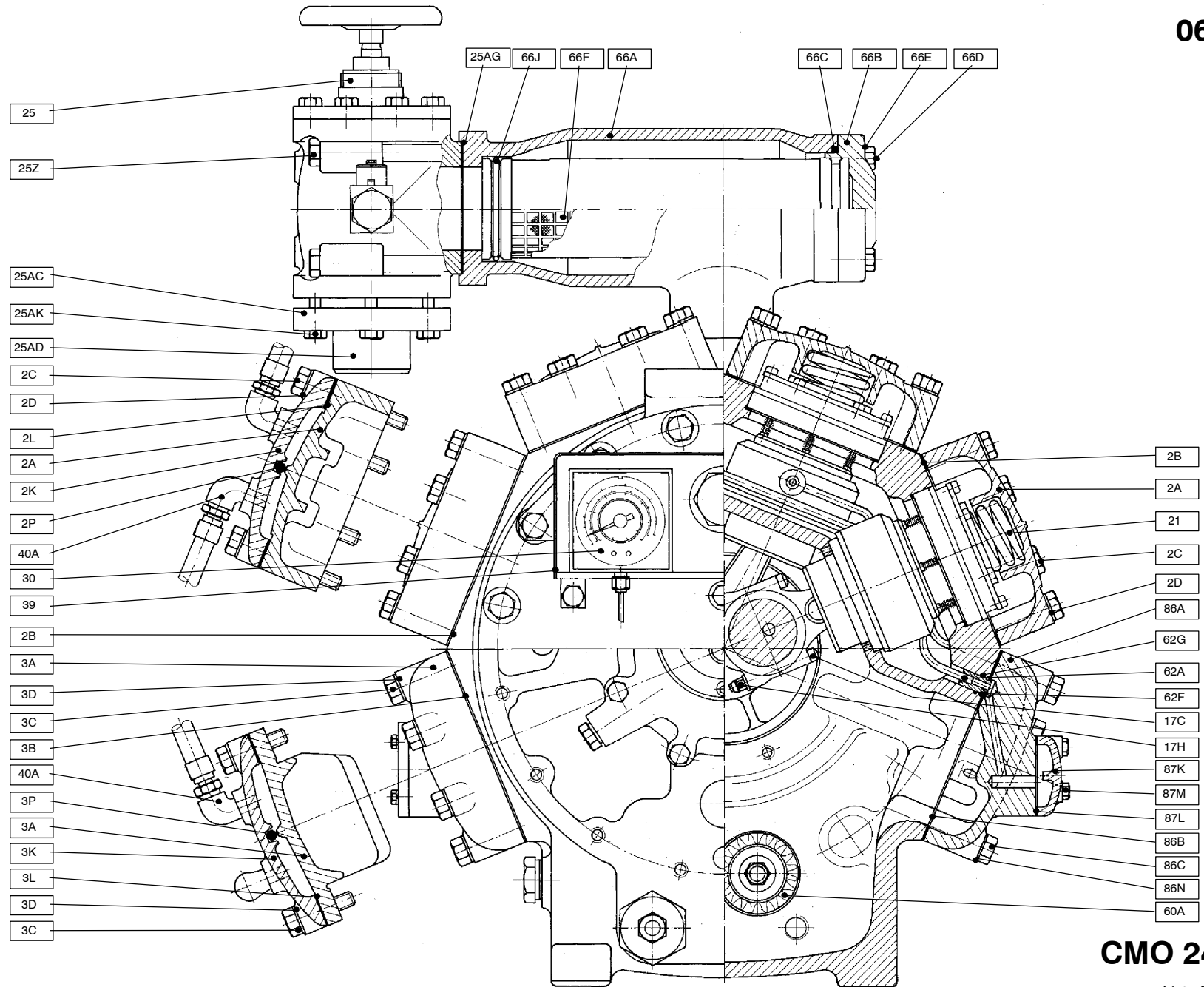
0662-213



CMO 24-26-28

List of parts 0662-215

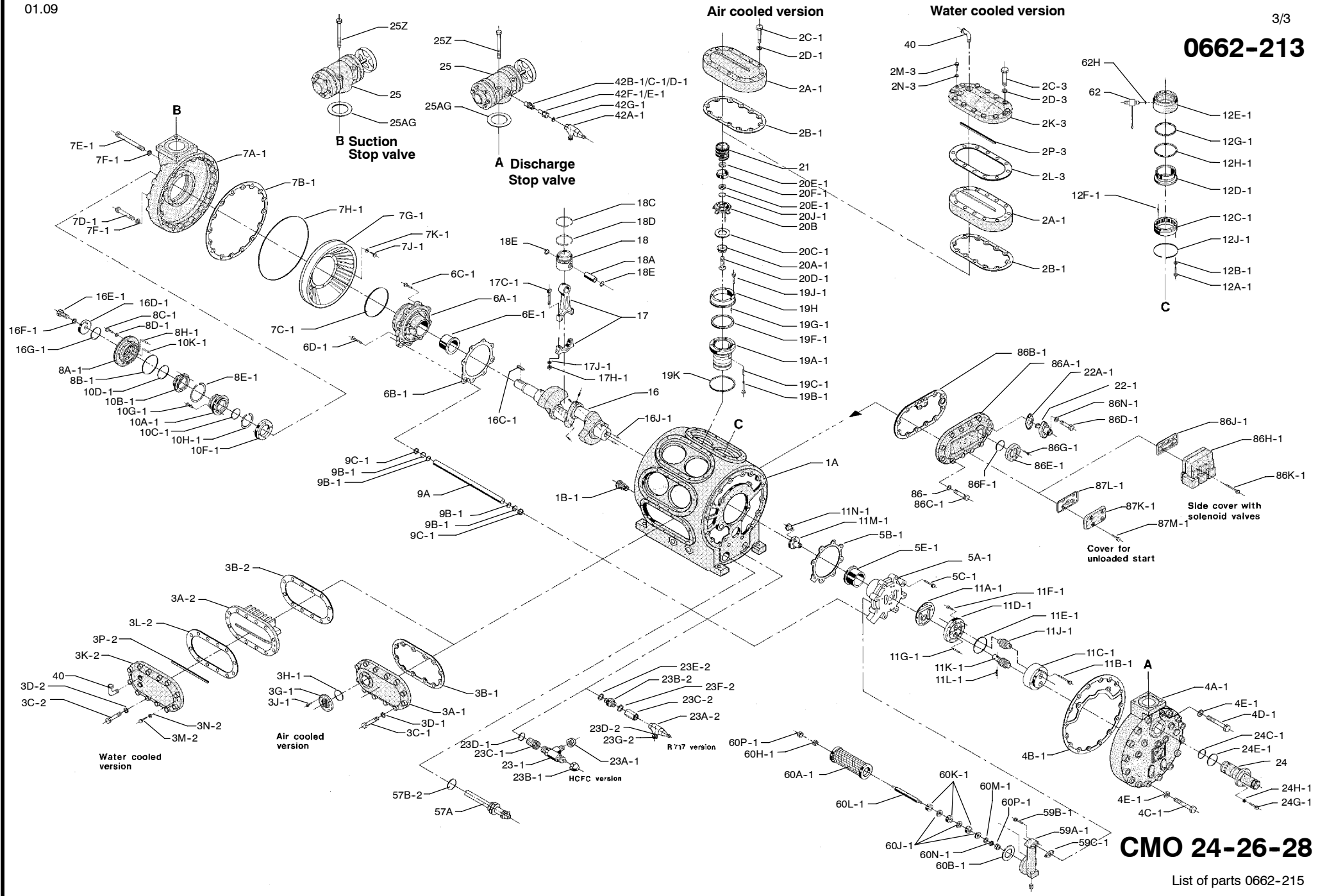
0662-213



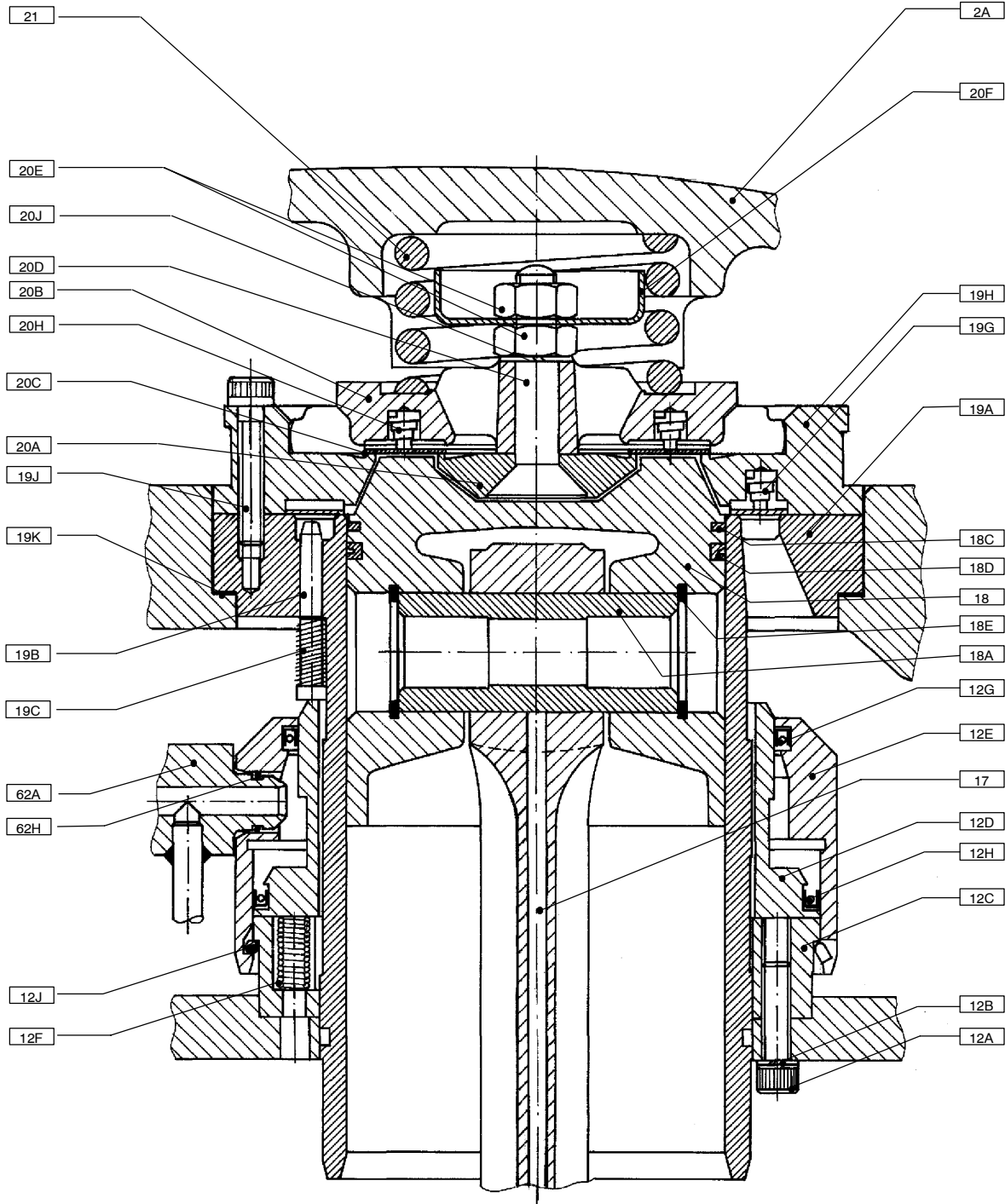
CMO 24-26-28

List of parts 0662-215

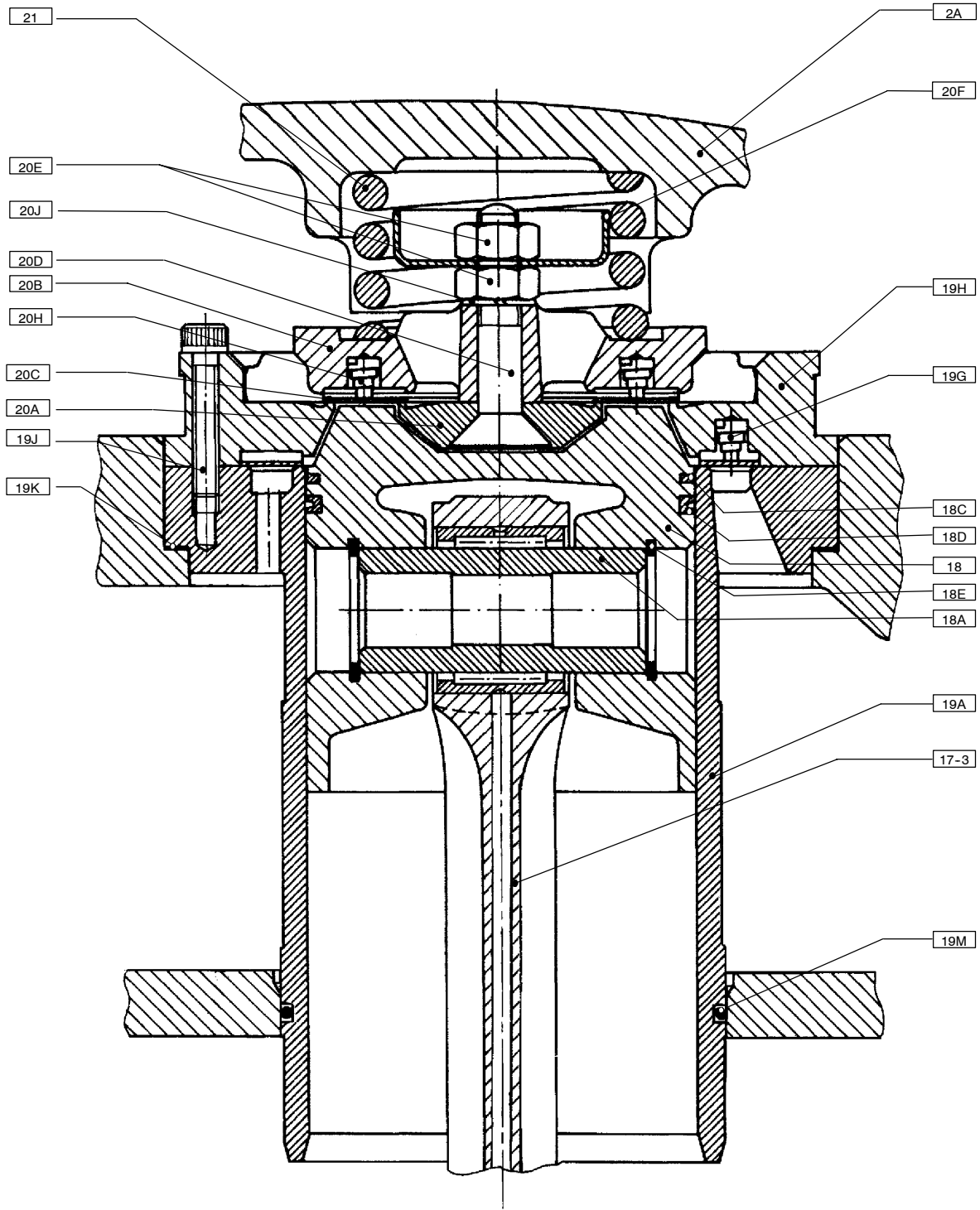
0662-213



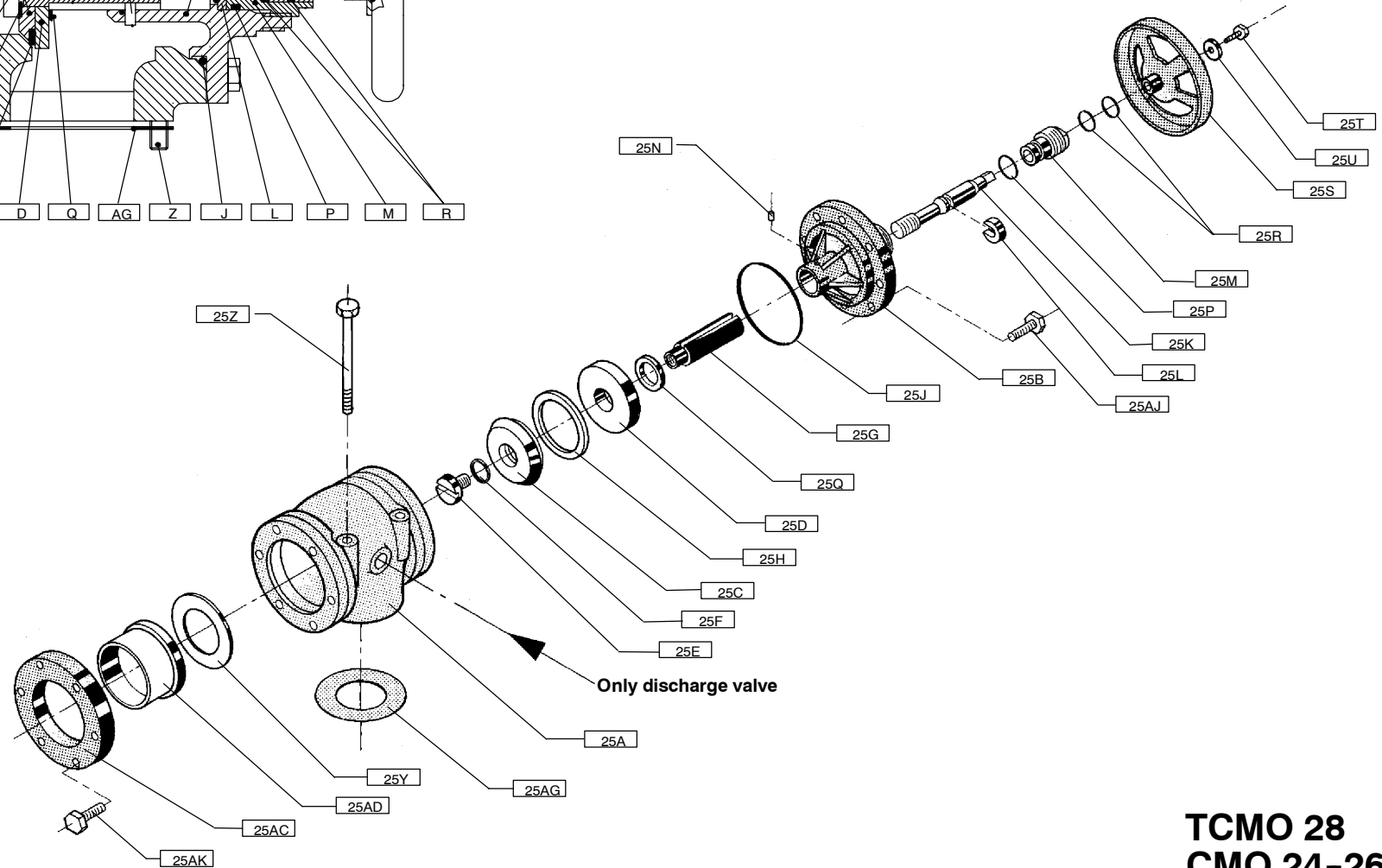
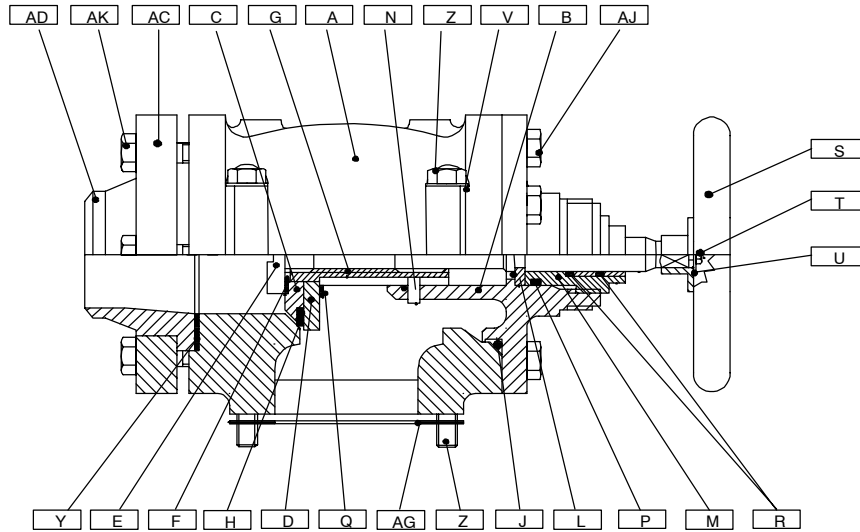
CMO 24-26-28



**Cylinder Liner
CMO + TCMO (LP)**

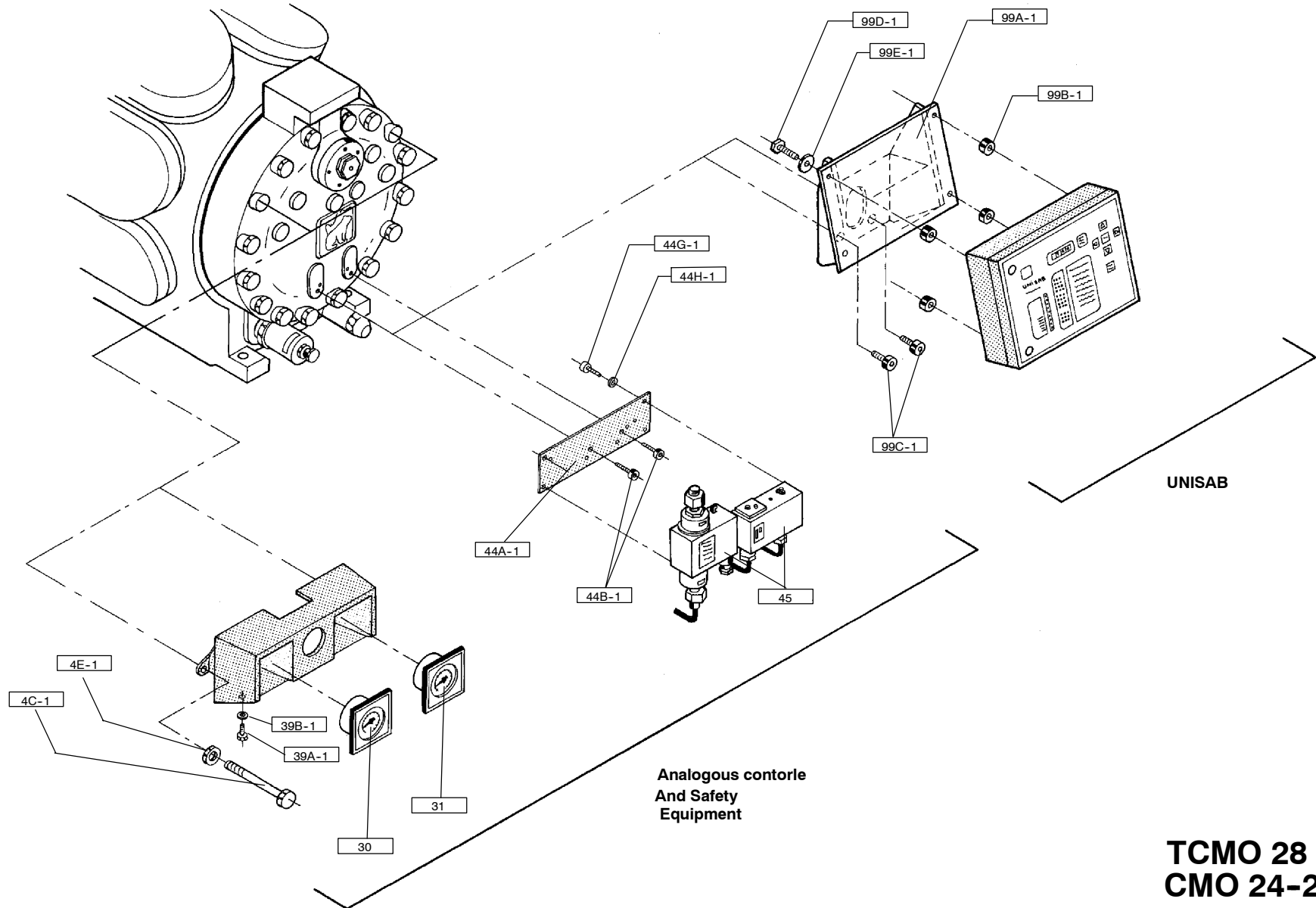


Cylinder Liner
TCMO (HP)



TCMO 28
CMO 24-26-28

List of parts 0662-215

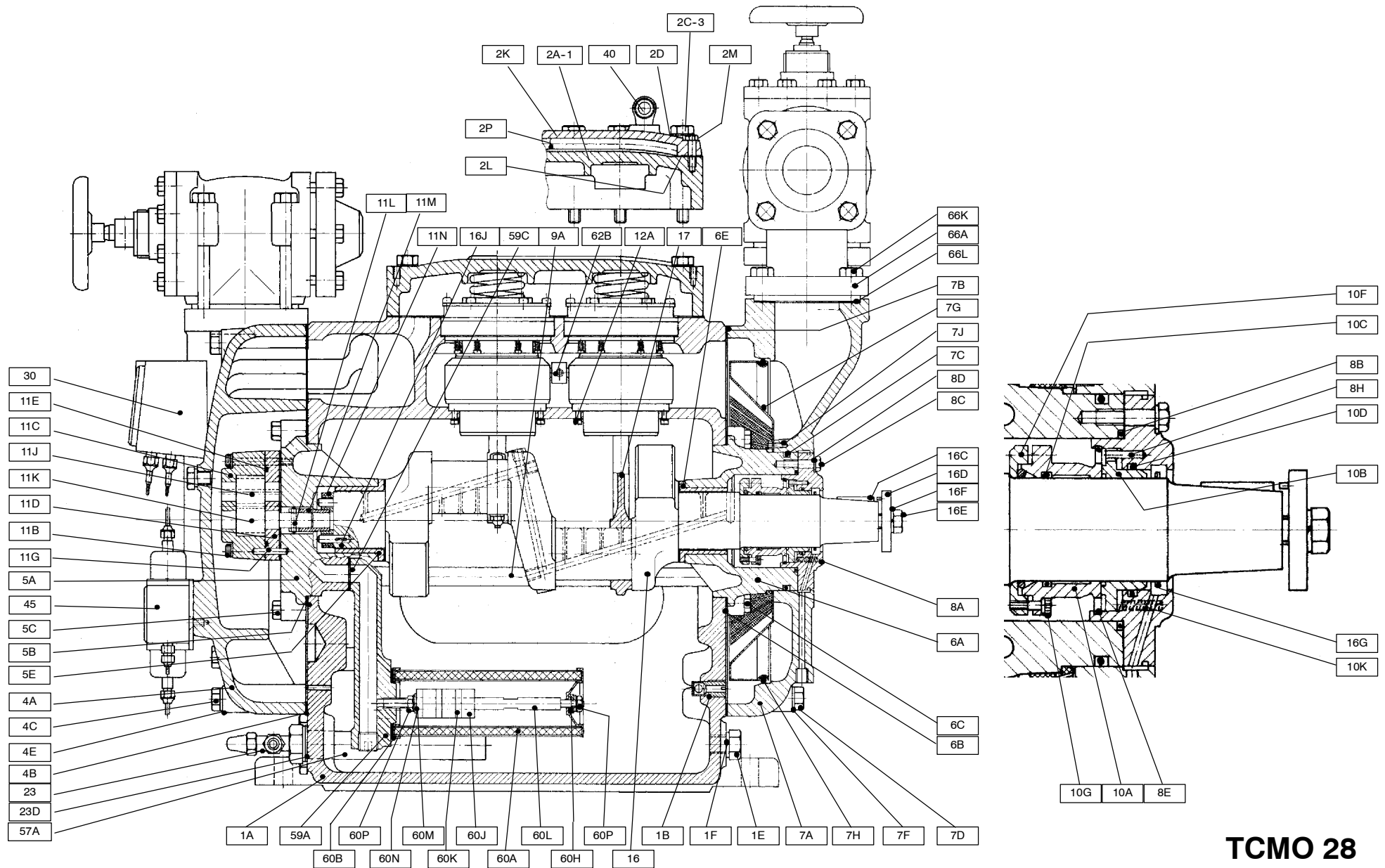


UNISAB

Analogous contorle
And Safety
Equipment

TCMO 28
CMO 24-26-28

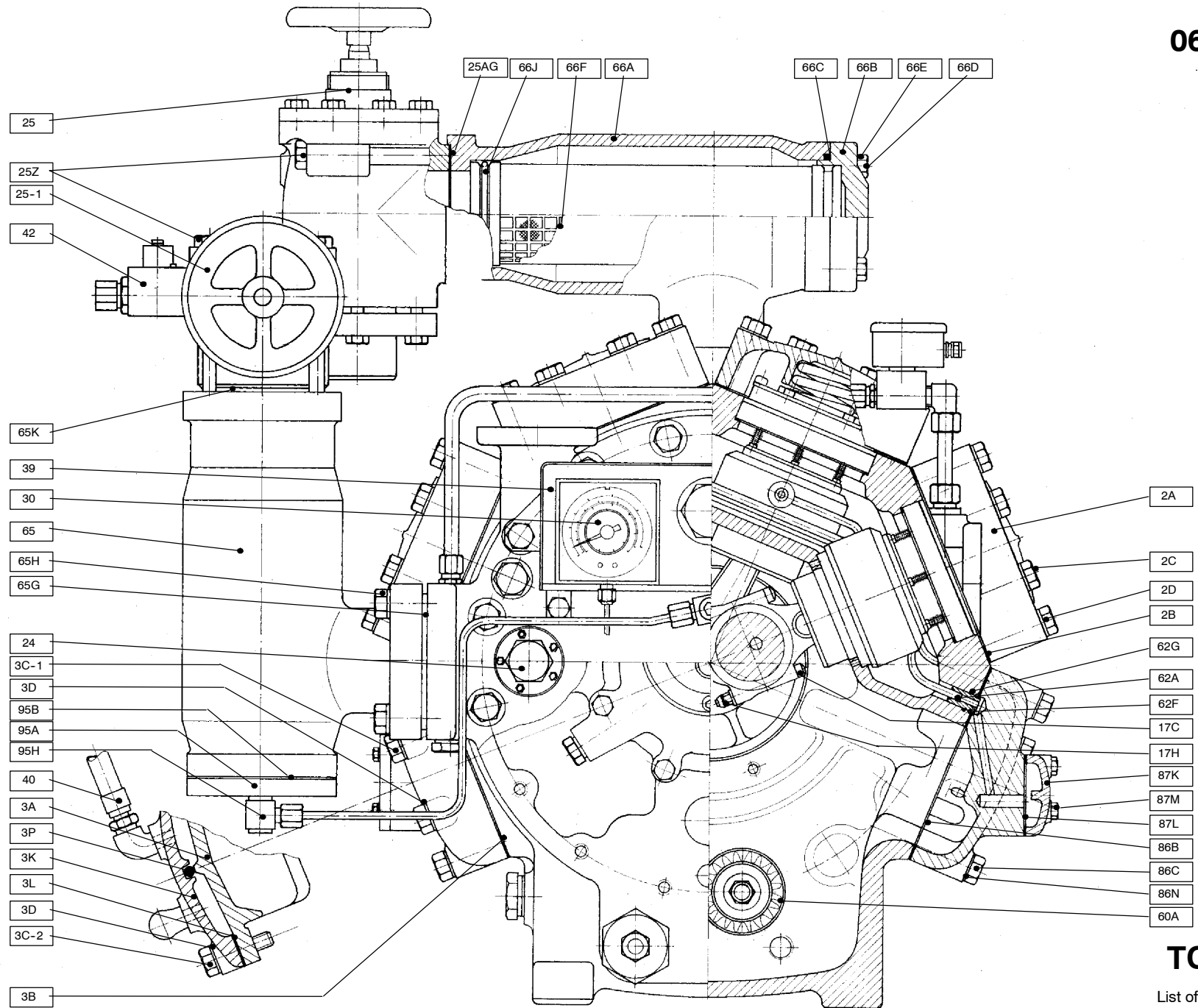
List of parts 0662-215



TCMO 28

List of parts 0662-215

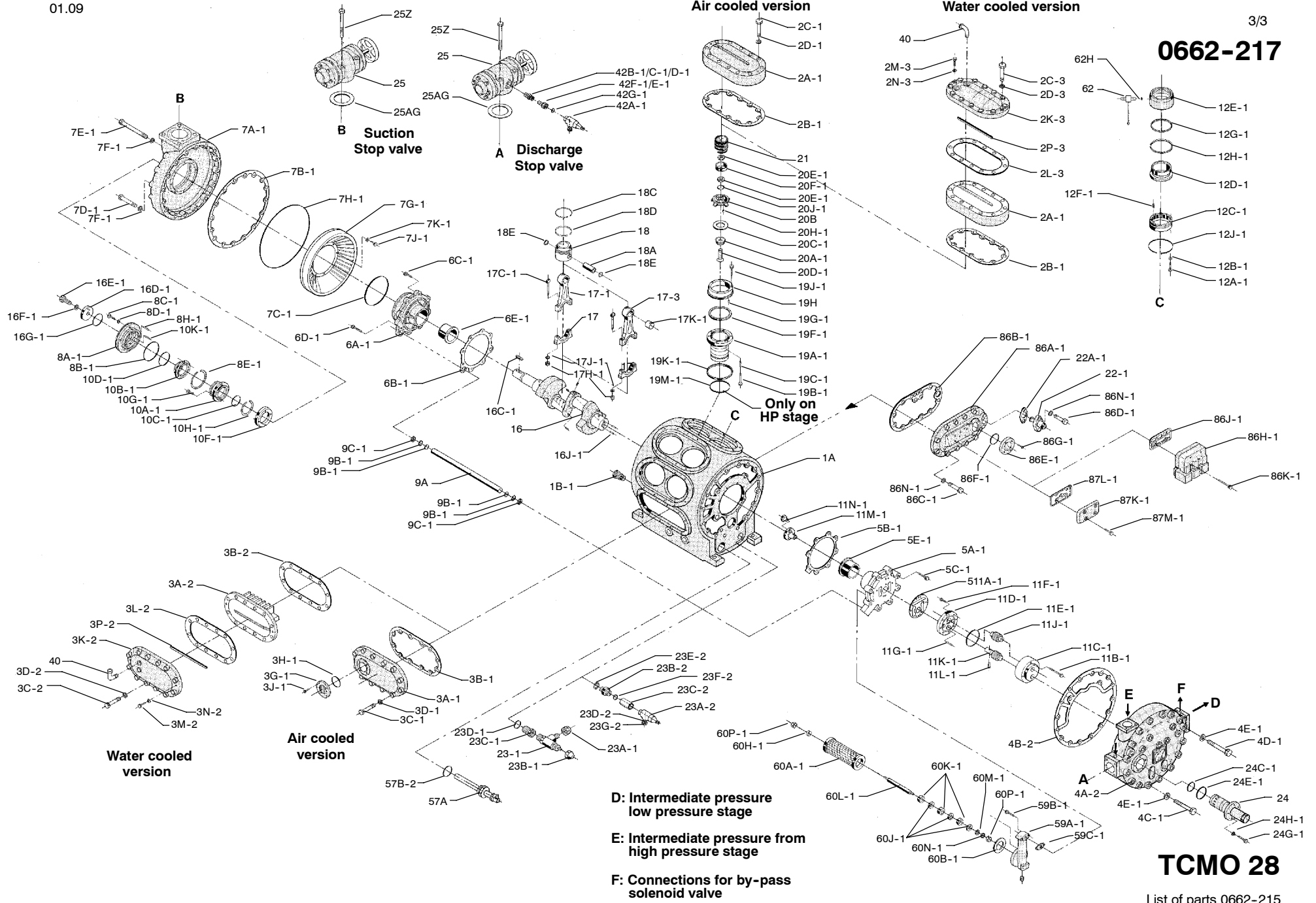
0662-217



TCMO 28

List of parts 0662-215

0662-217



Spare parts for CMO 24-26-28 & TCMO 28

	CMO 2	TCMO 2
Drawings for the compressor	0662-213	0662-214/217
Cylinder liner	0662-212	

Pos.	Designation	Weight each in kg	Number each compressor				Part no.
			CMO 24	CMO 26	CMO 28	TCMO 28	
	Compressor frame						
1A-1	Frame CMO 24		1				3111-076
1A-2	Frame CMO 26			1			3111-077
1A-3	Frame CMO 28				1		3111-078
1A-4	Frame TCMO 28, int. IP connection					1	3111-079
1A-4	Frame TCMO 28, ext. IP connection					1	3111-088
1B-1	Non return valve	0.400	1	1	1	1	2415-031
1C-1	Hexagon plug G 3/4" with collar	0.065	1	1	1	1	2314-027
1D-1	Gasket for plug dia. 34/27 x 1,5	0.002	1	1	1	1	2356-140
1E-1	Hexagon plug with collar G 1/2"	0.128	1	1	1	1	2314-026
1F-1	Gasket for plug dia. 27/21 x 1,5	0.008	1	1	1	1	2356-133
	Top cover - air cooled						
2A-1	Top cover	2.960	2	3	4	4	3113-198
2B-1	Gasket for top cover	0.012	2	3	4	4	2353-101
2C-1	Hexagon head M12 x 70	0.080	24	36	48	48	1424-060
2D-1	Washer dia. 24/13 x 2,5	0.006	24	36	48	48	1436-075
	Top cover - water cooled (see sketch below)						
2A-1	Top cover		2	3	4	4	3113-198
2B-1	Gasket for top cover	0.012	2	3	4	4	2353-101
2C-3	Hexagon head screw M12 x 90	0.092	24	36	48	48	1424-064
2D-3	Washer dia. 24/13 x 2,5	0.006	24	36	48	48	1436-075
2K-3	Water cover		2	3	4	4	3113-166
2L-3	Gasket for water cover	0.012	2	3	4	4	2353-172
2M-3	Hexagon head screw M8 x 30	0.014	4	6	8	8	1424-169
2N-3	Chamfered washer dia. 17/8,4 x 1,6	0.002	4	6	8	8	1436-034
2P-3	Rubber cord dia. 10 x 220	0.015	2	3	4	4	1323-077

Pos.	Designation	Weight each in kg	Number each compressor				Part no.
			CMO 24	CMO 26	CMO 28	TCMO 28	
Side cover with oil level glass							
3A-1	Side cover - air cooled	6.830	1	1	1	1	3113-099
3B-1	Gasket for side cover	0.012	1	1	1	1	2353-101
3C-1	Hexagon head screw M12 x 65	0.070	12	12	12	12	1424-059
3D-1	Washer dia. 24/13 x 2,5	0.006	12	12	12	12	1436-075
3G-1	Oil level glass	0.220	1	1	1	1	1226-015
3H-1	O-ring dia. 52,07 x 2,62	0.002	1	1	1	1	1331-140
3J-1	Hexagon head screw M6 x 18	0.004	4	4	4	4	1424-148
Side cover - water cooled							
3A-2	Side cover		1	1	1	1	3113-167
3B-2	Gasket for side cover	0.012	1	1	1	1	2353-172
3C-2	Hexagon head screw M12 x 50	0.052	12	12	12	12	1424-219
3D-2	Washer for dia. 24/13 x 2,5	0.006	12	12	12	12	1436-075
3K-2	Water cover		1	1	1	1	3113-166
3L-2	Gasket for water cover		1	1	1	1	2353-172
3M-2	Hexagon head screw M8 x 25	0.014	2	2	2	2	1424-168
3N-2	Washer for M8	0.002	2	2	2	2	1436-034
3P-2	Rubber cord dia. 10 x 220	0.015	1	1	1	1	1323-077
End cover at pump							
4A-1	End cover at pump - CMO	34.500	1	1	1		3113-006
4A-2	End cover at pump - TCMO int. IP	34.500				1	3113-112
4A-2	End cover at pump - TCMO ext. IP	34.500				1	3113-214
4B-1	Gasket for end cover - CMO	0.050	1	1	1		2353-105
4B-2	Gasket for end cover - TCMO int. IP	0.056				1	2353-142
4B-2	Gasket for end cover - TCMO ext. IP	0.056				1	2353-182
4C-1	Hexagon head screw M14 x 110	0.148	14	14	14	14	1424-087
4D-1	Hexagon head screw M14 x 120	0.160	2	2	2	2	1424-090
4E-1	Washer dia. 28/16 x 3	0.008	18	18	18	18	1436-076
Bearing cover at pump							
5A-1	Bearing cover		1	1	1	1	3113-168
5B-1	Gasket 0,3 mm	0.007	1	1	1	1	2353-166
5B-2	Gasket 0,5 mm	0.010	1	1	1	1	2353-167
5B-3	Gasket 0,8 mm	0.016	1	1	1	1	2353-168
5B-4	Gasket 1,0 mm	0.020	1	1	1	1	2353-169
5C-1	Hexagon head screw M10 x 40	0.032	8	8	8	8	1424-194
5E-1	Main bearing bushing		1	1	1	1	2132-086
5E-2	Main bearing bushing for repair - 0,5 mm undersize		1	1	1	1	2132-088

Pos.	Designation	Weight each in kg	Number each compressor				Part no.
			CMO 24	CMO 26	CMO 28	TCMO 28	
	Bearing cover at shaft end						
6A-1	Bearing cover at shaft end		1	1	1	1	3113-169
6B-1	Gasket 0,5 mm	0.010	1	1	1	1	2353-167
6C-1	Hexagon head screw M10 x 35	0.030	7	7	7	7	1424-193
6D-1	Hexagon head screw M10 x 50		1	1	1	1	1424-196
6E-1	Main bushing		1	1	1	1	2132-086
6E-2	Main bushing for repair - 0,5 mm undersize		1	1	1	1	2132-088
	End cover at shaft end						
7A-1	End cover		1	1	1	1	3113-172
7B-1	Gasket for end cover	0.022	1	1	1	1	2353-104
7C-1	O-ring dia. 132,7 x 7	0.024	1	1	1	1	1331-050
7D-1	Hexagon head screw M14 x 90	0.126	14	14	14	14	1424-083
7E-1	Hexagon head screw M14 x 160	0.208	2	2	2	2	1424-095
7F-1	Washer dia. 28/15 x 3	0.008	16	16	16	16	1436-076
7G-1	Dust strainer	0.818	1	1	1	1	3425-057
7H-1	Gasket for dust strainer dia. 326 x 8	0.074	1	1	1	1	2353-118
7J-1	Hexagon head screw M5 x 10	0.002	8	8	8	8	1424-140
7K-1	Lock washer dia. 10,5/5,3 x 0,6	0.002	8	8	8	8	1437-061
	Delivery oil pipe - internal						
9A-1	Oil pipe CMO 24	0.294	1				3141-148
9A-2	Oil pipe CMO 26	0.300		1			3141-149
9A-3	Oil pipe CMO/TCMO 28	0.310			1	1	3141-150
9B-1	O-ring dia. 18,5 x 2,62	0.003	4	4	4	4	1331-017
9C-1	Thrust ring	0.004	2	2	2	2	2351-020

Pos.	Designation	Weight each in kg	Number each compressor				Part no.
			CMO 24	CMO 26	CMO 28	TCMO 28	
	Shaft seal type SB CMO Spare parts kit: Consist of:		1	1	1	1	3126-165
10A-1	Slide ring, steel		1	1	1		3126-162
10B-1	Slide ring, carbon		1	1	1	1	3126-158
10C-1	O-ring dia. 53,57 x 3,53	0.002	1	1	1	1	1331-068
10D-1	O-ring dia. 63,09 x 3,53	0.004	1	1	1	1	1331-071
8B-1	O-ring dia. 98,02 x 3,53		1	1	1	1	1331-081
10G-1	Hex. socket screw M5 x 16	0.004	4	4	4	4	1413-329
	Allen key NV - 4 x 90 x 90		1	1	1	1	1612-392
	<i>Mounting instruction</i>						<i>0171-949</i>
	Shaft seal complete for CMO/TCMO Consist of:		1	1	1	1	3126-180
8A-1	Cover for shaft seal		1	1	1	1	3113-170
8B-1	O-ring dia. 98,02 x 3,53		1	1	1	1	1331-081
8C-1	Hex. head screw M8 x 30		5	5	5	5	1424-169
8D-1	Spring washer dia. 14,2 /8,2 x 2		5	5	5	5	1437-023
8E-1	Locking ring		1	1	1	1	3126-164
8H-1	Cylindrical pin		1	1	1	1	1446-081
10A-1	Slide ring, steel		1	1	1	1	3126-162
10B-1	Slide ring, carbon		1	1	1	1	3126-158
10C-1	O-ring dia. 53,57 x 3,53		1	1	1	1	1331-068
10D-1	O-ring dia. 63,09 x 3,53		1	1	1	1	1331-071
10F-1	Retaining flange		1	1	1	1	3126-161
10G-1	Hex. socket screw M5 x 16		4	4	4	4	1413-329
10H-1	Locking ring		1	1	1	1	3126-163
10K-1	Spring - DC 5 x 32 x dia. 1		8	8	8	8	2142-058
	Oil pump						
11 - 1	Oil pump complete *)		1	1	1	1	3141-154
11A-1	Gasket pump housing/cover		1	1	1	1	2353-170
11B-1	Socket cap screw M8 x 60	0.018	4	4	4	4	1413-364
11C-1	Pump housing		1	1	1	1	
11D-1	Cover for pump		1	1	1	1	
11E-1	O-ring dia. 75,8 x 3,5	0.004	1	1	1	1	1331-075
11F-1	Socket cap screw M6 x 16	0.006	4	4	4	4	1413-340
11G-1	Cylindrical pin dia. 6 x 36		2	2	2	2	1445-061
11J-1	Gear wheel		1	1	1	1	

Pos.	Designation	Weight each in kg	Number each compressor				Part no.
			CMO 24	CMO 26	CMO 28	TCMO 28	
11K-1	Gear wheel		1	1	1	1	
11L-1	Grooved pin dia. 6 x 24 DIN 1475		1	1	1	1	1446-032
11M-1	Dog clutch		1	1	1	1	2125-298
11N-1	Bushing for dog clutch - nylon		2	2	2	2	2132-087
	Unloading mechanism						
12 - 1	Unloading mechanism complete		4	4	8	4	3135-172
12A-1	Socket cap screw M5 x 20	0.004	8	12	16	8	1413-332
12B-1	Spring washer	0.002	8	12	16	8	1437-061
12C-1	Bottom part		4	6	8	4	3135-168
12D-1	Unloading piston		4	6	8	4	3135-169
12E-1	Unloading cylinder		4	6	8	4	3135-170
12F-1	Spring		64	84	128	64	2142-052
12G-1	Sealing ring		4	6	8	4	1332-113
12H-1	Sealing ring		4	6	8	4	1332-114
12J-1	Locking ring		4	6	8	4	3135-171

*) If the oil pump is faulty, the entire pump must be replaced

Pos.	Designation	Weight each in kg	Number each compressor				Part no.
			CMO 24	CMO 26	CMO 28	TCMO 28	
	Crank shaft						
16 - 1	Crank shaft CMO 24 complete		1				3121-195
16 - 2	Crank shaft CMO 26 complete			1			3121-196
16 - 3	Crank shaft CMO/TCMO 28				1	1	3121-197
16C-1	Key 14 x 9 x 40	0.034	1	1	1	1	2123-003
16D-1	Plain washer	0.245	1	1	1	1	2125-040
16E-1	Hexagon head screw M12 x 40	0.070	1	1	1	1	1424-217
16F-1	Spring washer dia. 21/12.2 x 2.5	0.006	1	1	1	1	1437-081
16G-1	Spray ring	0.004	1	1	1	1	1437-255
16H-1	Plug	0.002	3	3	3	3	1413-250
16J-1	Grooved pin DIN 1474	0.015	2	2	2	2	1446-031
	Connecting rod - for CMO and TCMO LP						
17 - 1	Connecting rod complete with bolts		4	6	8	6	3123-076
17 - 2	Connecting rod complete undersize		4	6	8	6	3123-078
17C-1	Bolt for connecting rod	0.030	8	12	16	12	2111-004
17H-1	Self locking nut UNF 5/16"	0.006	8	12	16	12	1433-115
17J-1	Chamfered washer dia. 17/8,4 x 1,6	0.008	8	12	16	12	1436-034
	Connecting rod - for TCMO HP needle bearing						
17 - 3	Connecting rod complete with bolts					2	3123-077
17 - 4	Connecting rod complete undersize					2	3123-079
17C-1	Bolts for connection rod	0.030				4	2111-004
17H-1	Self locking nut UNF 5/16"	0.006				4	1433-115
17J-1	Chamfered washer dia. 17/8,4 x 1,6	0.008				4	1436-034
17K-1	Needle bearing					2	1511-272
	Piston						
18	Piston with pin and rings		4	6	8	8	3124-062
18A-1	Piston pin		4	6	8	8	3125-122
18C-1	Piston ring		4	6	8	8	3125-129
18D-1	Oil scraper ring		4	6	8	8	3125-124
18E-1	Circlip for bore dia. 22		8	12	16	16	1437-138

Pos.	Designation	Weight each in kg	Number each compressor				Part no.
			CMO 24	CMO 26	CMO 28	TCMO 28	
	Cylinder liner with suction valve - See drawing 0662-212						
19 - 1	Cylinder liner complete - CMO and TCMO LP - R717 for capacity regulation		4	6	8	6	3112-077
19 - 2	Cylinder liner complete - TCMO LP/HP - R717 without capacity regulation					2	3112-079
19 - 4	Cylinder liner complete - CMO and TCMO LP - HFC for capacity regulation		4	6	8	6	3112-076
19 - 5	Cylinder liner complete - TCMO LP/HP - HFC/HCFC without capacity regulation					2	3112-078
19A-1	Cylinder liners LP/HP - R717/HFC/HCFC		4	6	8	8	3112-075
19B-1	Unloading pin		24	36	48	36	2122-023
19C-1	Spring for unloading pin		24	36	48	36	2142-034
19F-1	Ring plate for suction valve		4	6	8	8	3131-072
19G-1	Valve spring		16	24	32	32	2141-047
19H-1	Suction valve retaining plate R717		4	6	8	8	3132-075
19H-2	Suction valve retaining plate HFC		4	6	8	8	3132-073
19J-1	Socket cap screw M5 x 25		24	36	48	48	1413-333
19K-1	Gasket 0,5 mm		4	6	8	8	2356-288
19K-2	Gasket 0,8 mm		4	6	8	8	2356-289
19M-1	O-ring dia. 72,69 x 2,62					2	1331-147
	Discharge valve						
20 - 1	Discharge valve complete R717		4	6	8	8	3136-080
20 - 2	Discharge valve complete HFC/HCFC		4	6	8	8	3136-079
20A-1	Valve seat		4	6	8	8	3133-008
20B-1	Valve retaining plate R717		4	6	8	8	3132-074
20B-2	Valve retaining plate HFC/HCFC		4	6	8	8	3132-072
20C-1	Ring plate for discharge valve		4	6	8	8	3131-006
20D-1	Counter sunk screw M8 x 40		4	6	8	8	1413-106
20E-1	Nut M8		8	12	16	16	1432-063
20F-1	Spring guide		4	6	8	8	2145-011
20H-1	Valve spring		24	36	48	48	2141-047
20J-1	Spring washer		4	6	8	8	1437-054

Pos.	Designation	Weight each in kg	Number each compressor				Part no.
			CMO 24	CMO 26	CMO 28	TCMO 28	
21	Spring for safety head Spring		4	5	8	8	2142-059
21 - 1	Oil pressure valve Oil pressure valve - complete	0.450	1	1	1	1	3142-150
22A-1	Gasket	0.001	1	1	1	1	2354-075
23 - 1	Oil charging valve for HFC/HCFC refrigerant Oil charging valve	0.300	1	1	1	1	1374-132
23A-1	Union nut 3/4" flare	0.005	1	1	1	1	1376-012
23B-1	Seal cap 1/2"	0.002	1	1	1	1	1376-042
23C-1	Bushing G 3/4" x G 3/8"	0.140	1	1	1	1	2312-007
23D-1	Gasket dia. 34/27 x 1,5	0.001	1	1	1	1	2356-140
23A-2	for R717 refrigerant Oil charging valve - complete	0.300	1	1	1	1	2412-585
23B-2	Threaded reducing nipple	0.155	1	1	1	1	2311-059
23C-2	Socket	0.075	1	1	1	1	2313-035
23D-2	Gasket	0.001	1	1	1	1	2356-123
23E-2	Gasket	0.001	1	1	1	1	2356-140
23F-2	Gasket	0.001	1	1	1	1	2356-283
23G-2	Nut	0.060	1	1	1	1	2313-027
24 - 1	By-pass valve By-pass valve dia. 20 24 bar	2.400	1	1	1		3137-011
24 - 2	By-pass valve dia. 20 22 bar	2.400	1	1	1		3137-012
24 - 3	By-pass valve dia. 10 24 bar	0.850				1	3137-013
24 - 4	By-pass valve dia. 10 22 bar	0.850				1	3137-034
24C-1	O-ring for cylinder dia. 44,05 x 3,5	0.006	1	1	1		1331-065
24C-4	O-ring for cylinder dia. 25,07 x 2,5	0.004				1	1331-131
24E-1	O-ring for cover dia. 56,75 x 3,5	0.006	1	1	1		1331-069
24E-4	O-ring for cover dia. 32,99 x 2,6	0.004				1	1331-133
24G-1	Hexagon head screw M6 x 25	0.006	5	5	5		1424-153
24G-4	Hexagon head screw M4 x 16	0.002				5	1424-135
24H-1	Spring washer dia. 11,1/6,1 x 1,6	0.002	5	5	5		1437-022
24H-4	Spring washer dia. 7,1/4,1 x 0,9	0.001				5	1437-020

Pos.	Designation	Valve dim. dia.	Weight each in kg	Number each valve	Part no.
	Stop valve				
25 - 1	Complete valve - discharge	40		1	2414-066
25 - 2	complete valve - suction	50		1	2414-067
25A-1	Valve housing	40		1	2432-156
25A-2	Valve housing	50		1	2432-157
25B-1	Valve bonnet	40-50	1.760	1	2433-028
25C-1	Front part for cone	40-50	0.098	1	2444-090
25D-1	Rear part for cone	40-50	0.180	1	2444-091
25E-1	Screw for cone	40-50	0.054	1	2444-017
25F-1	Gasket for screw	40-50	0.002	1	2356-138
25G-1	Threaded connection	40-50	0.180	1	2445-053
25H-1	Sealing ring dia. 62/45 x 3	40-50	0.010	1	2354-003
25J-1	O-ring for bonnet dia. 72,4 x 5,3	40-50	0.010	1	1331-154
25K-1	Spindle	40-50	0.234	1	2442-023
25L-1	Lock washer	40-50	0.010	1	2445-019
25M-1	Packing gland complete with o-rings	40-50	0.152	1	2452-073
25N-1	Guide pin dia. 5 x 10	40-50	0.002	1	1446-085
25P-1	O-ring dia. 21,8 x 3,5	40-50	0.002	1	1331-020
25Q-1	Nylon washer dia. 39,5/28 x 1,5	40-50	0.002	1	2354-018
25R-1	O-ring dia. 17,12 x 3,5	40-50	0.002	2	1331-016
25S-1	Hand wheel dia. 120	40-50	0.164	1	1365-036
25T-1	Screw for hand wheel	40-50	0.002	1	1424-140
25U-1	Washer for hand wheel	40-50	0.004	1	1436-024
25Y-1	Gasket for welding nipple	40-50	0.008	1	2356-087
25Z-1	Screw valve/compressor M12 x 130	40	0.116	4	1424-072
25Z-2	Screw valve/compressor M14 x 130	50	0.160	4	1424-091
25AC-1	Counter flange	40-50	1.162	1	2344-091
25AD-1	Welding nipple dia. 40		0.992	1	2322-100
25AD-2	Welding nipple dia. 50		0.856	1	2322-102
25AD-3	Welding nipple dia. 65		0.838	1	2322-103
25AG-1	Gasket valve/compressor	40	0.014	1	2356-212
25AG-2	Gasket valve/compressor	50	0.018	1	2356-213
25AJ-1	Screw bonnet/valve M10 x 25	40-50	0.024	8	1424-191
25AK-1	Screw for counter flange M10 x 40	40-50	0.032	6	1424-194

Pos.	Designation	Weight each in kg	Number each compressor				Part no.
			CMO 24	CMO 26	CMO 28	TCMO 28	
	Suction and oil pressure gauge						
30 - 1	R12/R22 bar and °C	0.700	1	1	1	1	1541-251
30 - 2	R502 bar and °C	0.700	1	1	1	1	1541-365
30 - 3	R717 bar and °C	0.700	1	1	1	1	1541-109
30 - 4	R134a/R404A bar and °C	0.700	1	1	1	1	1541-071
	Discharge pressure gauge						
31 - 1	R12/R22 bar and °C HP	0.700	1	1	1		1541-191
31 - 2	R12/R22 bar and °C IP-HP	0.700				1	1541-278
31 - 3	R502 bar and °C HP	0.700	1	1	1		1541-364
31 - 4	R502 bar and °C IP-HP	0.700				1	1541-366
31 - 5	R717 bar and °C HP	0.700	1	1	1		1541-050
31 - 6	R717 bar and °C IP-HP	0.700				1	1541-103
31 - 7	R134a/R404A bar and °C HP	0.700	1	1	1		1541-072
31 - 8	R134a/R404A bar and °C IP-HP	0.700				1	1541-073
	Bracket for gauge						
39 - 1	Bracket	1.000	1	1	1	1	3146-015
39A-1	Hexagon head screw M5 x 6	0.002	4	4	4	4	1424-140
39B-1	Spring washer	0.002	4	4	4	4	1437-061
	Cooling water connections						
40A-1	Set of hoses for cooling water 4 cyl.		1				3185-226
40A-2	Set of hoses for cooling water 6 cyl.			1			3185-227
40A-3	Set of hoses for cooling water 8 cyl.				1	1	3185-228
40A-4	Set of hoses SIDE COVER only						3185-229
	Parts for instruments						
41A-1	Gasket dia. 19/14 x 1,5	0.001	6	6	6	8	2356-124
41B-1	Connecting piece - 2 pipes	0.025	2	2	2	2	2333-012
41C-1	Plug for connecting piece	0.040	3	3	3	4	2314-048
41D-1	Union nut - R12 - R22 - R502	0.003	5	5	5	6	1376-010
41E-1	Union nut M10 x 0,75 - R717	0.010	5	5	5	6	1349-011
41F-1	Gasket dia. 9/3 x 1 - R717	0.001	5	5	5	6	2356-117
41H-1	Gasket dia. 14,5/6 x 1,5	0.001	2	2	2	2	2356-120
41J-1	Connecting piece - 1 pipe	0.015				1	2333-014
41Q-1	Pipe holder	0.004	1	1	1	1	1377-096
41R-1	Cylinder head screw M4 x 6	0.002	1	1	1	1	1412-200
41T-1	Pipe section with flare	0.006	7	7	7	7	2333-016
41U-1	Connecting piece - 3 pipes	0.017	1	1	1	1	2333-013
	Purge valve						
42A-1	Purge valve complete	0.300	1	1	1	1	2412-585

Pos.	Designation	Weight each in kg	Number each compressor				Part no.
			CMO 24	CMO 26	CMO 28	TCMO 28	
42B-1	Threaded nipple						
42C-1	Cutting ring	0.135	1	1	1	1	1349-062
42D-1	Nut						
42E-1	Nut	0.070	1	1	1	1	2313-045
42F-1	Connection pipe with collar	0.025	1	1	1	1	2334-027
42G-1	Gasket	0.001	2	2	2	2	2356-123
42H-1	Nut	0.060	1	1	1	1	2313-027
	Parts for mounting pressure control						
44A-1	Bracket for pressure controls		1	1	1	1	2213-409
44B-1	Counter sunk screw M6 x 12	0.020	2	2	2	2	1413-090
44C-1	Bracket for KP77 or KP1		1	1	1	1	2213-411
44D-1	Bracket for KP98		1	1	1	1	2213-410
44E-1	Socket cap screw M6 x 12	0.004	4	4	4	4	1413-339
44F-1	Spring washer	0.006	4	4	4	4	1437-022
44G-1	Cylinder head screw M4 x 6	0.002	8	8	8	8	1412-200
44H-1	Spring washer dia. 7,1/4 x 1	0.002	8	8	8	8	1437-020
	Pressure controls for HFC/HCFC						
45A-1	Pressure control KP15	0.532	1	1	1	1	1373-135
45B-1	Differential pressure control MP55	0.864	1	1	1	1	1373-159
	for R717						
45A-2	Pressure control KP15 A	0.754	1	1	1	1	1373-142
45B-2	Differential pressure control MP55 A	0.978	1	1	1	1	1373-162
	Temperature controls						
46A-1	Temperature control KP77	0.466	1	1	1	1	1373-044
46B-1	Temperature control KP98	0.674	1	1	1	1	1373-043
46C-1	Phil pocket for temperature control	0.162	3	3	3	3	1377-171
46D	Gasket for phil pocket dia. 27/21 x 1,5	0.008	3	3	3	3	2356-133
	Coupling						
48A-1	Disc pack	0.282	2	2	2	2	1524-155
48B-1	Bolt	0.054	16	16	16	16	1524-163
48C-1	Level washer	0.004	16	16	16	16	1524-179
48D-1	Lock nut	0.006	16	16	16	16	1524-171
	Crankcase heater						
57A-4	Crankcase heater 270W, 115V, G 1 1/4		1	1	1	1	3181-034
57A-5	Crankcase heater 270W, 230V, G 1 1/4		1	1	1	1	3181-035

Pos.	Designation	Weight each in kg	Number each compressor				Part no.
			CMO 24	CMO 26	CMO 28	TCMO 28	
57A-6	Crankcase heater 270W, 250V, G 1 1/4		1	1	1	1	3181-036
57B-2	Sealing ring dia. 42/49 x 6,5	0.022	1	1	1	1	1349-213
	Bracket for oil filter						
59A-1	Bracket for oil filter		1	1	1	1	3421-081
59B-1	Socket screw M8 x 35	0.018	2	2	2	2	1413-359
59C-1	Gasket for bracket		1	1	1	1	2353-171
59D-1	Plug		1	1	1	1	1413-265
	Oil filter Complete 4524-052						
60A	Filter element		1	1	1	1	1517-124
60B	Gasket for filter		1	1	1	1	1334-025
60H	Washer dia. 19/8,2 x 6		1	1	1	1	2114-036
60J	Iron ring		3	3	3	3	2114-038
60K	Magnets		3	3	3	3	1517-022
60L	Rod for magnets		1	1	1	1	2112-156
60M	Rubber ring		1	1	1	1	1334-012
60N	Washer		1	1	1	1	1436-034
60P	Locking nut		1	1	1	1	1433-073
	Oil pipes for unloading mechanism						
	CMO 24						
62A-1	Pipe set	0.200	1				3143-292
	CMO 26						
62A-2	Pipe set	0.114		1			3143-291
	CMO 28						
62A-3	Pipe set	0.108			1		3143-290
	TCMO 28						
62A-4	Pipe set	0.108				1	3143-293
	Joint for oil pipes						
62F	Spirolox-ring RS 50	0.002	4	4	4	4	1437-275
62G	O-ring dia. 9,25 x 1,78	0.001	4	4	4	4	1331-010
62H	O-ring 7,65 x 1,78	0.001	4	6	8	4	1331-009
	Oil separator CMO 2 - HFC/HCFC						
65 - 1	Oil separator - complete		1	1	1		4241-208
65A-1	Housing		1	1	1		4241-207
65B-1	Demister		1	1	1		1375-288
65C-1	End cover		1	1	1		3422-114
65D-1	O-ring for 65C		1	1	1		1331-089
65E-1	Hexagon head screw M16 x 45		4	4	4		1424-102

Pos.	Designation	Weight each in kg	Number each compressor				Part no.
			CMO 24	CMO 26	CMO 28	TCMO 28	
65F-1	Spring washer		4	4	4		1437-057
65G-1	Gasket against compr. dia. 100/62 x 1,5		1	1	1		2356-212
65H-1	Hexagon head screw M12 x 40		4	4	4		1424-217
65J-1	Stop valve complete		1	1	1		2414-066
65K-1	Gasket for stop valve dia. 100/62 x 1,5		1	1	1		2356-212
65L-1	Hexagon head screw M12 x 120		4	4	4		1424-069
	Oil separator CMO 2 - R717						
65 - 2	Oil separator - complete		1	1	1		4241-230
65G-2	Gasket against compr. dia. 100/62 x 1,5		1	1	1		2356-212
65H-2	Hexagon head screw M12 x 40		4	4	4		1424-217
65J-2	Stop valve SCV 40D 111		1	1	1		2411-840
	Oil separator TCMO 2 - R717 - HFC/HCFC						
65 - 3	Oil separator - complete					1	4241-233
65A-3	Housing					1	4241-232
65B-3	Demister					1	1375-295
65C-3	End cover					1	3254-315
65D-3	O-ring dia. 91,97 x 3,5	0.004				1	1331-080
65E-3	Hexagon head screw M12 x 35	0.042				4	1424-216
65F-3	Spring washer	0.004				4	1437-081
65G-3	Gasket against compr. dia. 100/62 x 1,5					1	2356-212
65H-3	Hexagon head screw M12 x 40	0.046				1	1424-217
65J-3	Stop valve complete					1	2414-066
65K-3	Gasket for stop valve dia. 100/62 x 1,5	0.014				1	2356-212
65L-3	Hexagon head screw M12 x 120	0.116				1	1424-069
	Extra suction filter - only delivered on demand						
66 - 1	Extra suction filter complete		1	1	1	1	4521-030
66A-1	Filter housing		1	1	1	1	3421-063
66B-1	End cover	2.310	1	1	1	1	3422-103
66C-1	O-ring dia. 91,67 x 3,53	0.004	1	1	1	1	1331-080
66D-1	Hexagon head screw M12 x 40	0.046	4	4	4	4	1424-217
66E-1	Spring washer dia. 20,2/12,2 x 2,5	0.004	4	4	4	4	1437-081
66F-1	Strainer filter	0.374	1	1	1	1	3425-082
66G-1	Filter bag	0.028	1	1	1	1	3425-083
66H-1	Insert for filter bag	0.032	1	1	1	1	3424-058

Pos.	Designation	Weight each in kg	Number each compressor				Part no.
			CMO 24	CMO 26	CMO 28	TCMO 28	
66J-1	O-ring dia. 75,56 x 5,33	0.004	1	1	1	1	1331-042
66K-1	Hexagon head screw M14 x 45	0.070	4	4	4	1	1424-242
66L-1	Gasket against compr. dia. 112/70 x 1,5	0.018	1	1	1	1	2356-213
	Oil cooler R717						
76A-1	Angle swivel screw-joint dia. 3/8"/12	0.180	1	1	1	1	1349-091
76B-1	Bushing G 3/4" x G 3/8"		2	2	2	2	2312-022
76C-1	Gasket dia. 32/27 x 1,5	0.008	2	2	2	2	2356-139
76D-1	Straight swivel-in joint	0.070	2	2	2	2	1349-053
76E-1	Angle swivel screw-in joint	0.170	1	1	1	1	1349-091
76F-1	Straight screw-in joint	0.058	1	1	1	1	1349-054

Pos.	Designation	Weight each in kg	Number each compressor				Part no.
			CMO 24	CMO 26	CMO 28	TCMO 28	
	Oil cooler HFC/HCFC						
76A-2	Angle swivel screw-joint dia. 3/8"/10	0.178	1	1	1	1	1349-090
76B-2	Bushing G 3/4" x G 3/8"		2	2	2	2	2312-022
76C-2	Gasket dia. 32/27 x 1,5	0.008	2	2	2	2	2356-139
76D-2	Straight screw-in joint	0.070	2	2	2	2	1349-053
76E-2	Angle swivel screw-in joint	0.170	1	1	1	1	1349-091
76F-2	Angle swivel screw-in joint	0.170	1	1	1	1	1349-091
80	Solenoid valve blok, complete with 0,6 mm orifice for oil return. excl. coil	2.040	1	1	1	1 or 2	1372-179
	Strainer kit consist of:		1	1	1	1 or 2	1372-089
80E	Strainer						
80G	Al-gasket						
	Service kit consist of:		1	1	1	1 or 2	1372-086
80P	Armature tube						
80H	Armature						
80K	O-ring						
80M	O-ring						
80L	Al-gasket						
80N	Snap fastener						
	Seal kit consist of:		1	1	1	1 or 2	1372-091
80G	Al-gasket						
80K	O-ring						
80M	O-ring						
80L	Al-gasket						
80Q	Al-gasket						
	Orifice kit 0,6 mm consist of:		1	1	1	1 or 2	1371-034
80L	Al-gasket						
80Q	Al-gasket						
80I	Orifice 0,6 mm						
	Orifice kit 0,8 mm consist of:		1	1	1	1 or 2	1371-035
80L	Al-gasket						
80Q	Al-gasket						
80I	Orifice 0,8 mm						
	Orifice kit 1,0 mm consist of:		1	1	1	1 or 2	1371-036
80L	Al-gasket						
80Q	Al-gasket						
80I	Orifice 1,0 mm						

Pos.	Designation	Weight each in kg	Number each compressor				Part no.
			CMO 24	CMO 26	CMO 28	TCMO 28	
	Orifice kit 3,3 mm (for thermopump only) consist of:		1	1	1	1 or 2	1371-037
80L	Al-gasket						
80Q	Al-gasket						
80I	Orifice 3,3 mm						
80J-1	Coil 220/230V, 50/60 Hz, 10 W	0.285					1372-537
80J-2	Coil 110 V, 50/60 Hz, 10 W	0.285					1372-538
80J-3	Coil 240 V, 50 Hz, 10 W	0.285					1372-539
80J-4	Coil 24 V, 50 Hz, 10 W	0.285					1372-541
	Injection system for TCMO Only for TCMO with int. IP system						
83A-1	Guard	0.968				1	3116-048
83B-1	Nipple	0.156				1	3116-041
83C-1	O-ring dia. 25 x 3,5 for 83B	0.012				1	1331-022
83D-1	O-ring dia. 20,2 x 3,5 for 83B	0.009				1	1331-019
83E-1	Socket cap screw M6 x 16	0.006				2	1413-340
83F-1	Spring washer 11,1/6,1 x 1,6	0.004				2	1437-022
83G-1	Stop valve DN 20 with oval flange	1.800				1	2412-016
83H-1	Gasket for stop valve dia. 44/33 x 1,5	0.002				1	2356-039
83J-1	Hexagon head screw M12 x 40	0.045				2	1424-217
83K-1	Stop valve SG 6	0.540				1	2413-010
83L-1	Gasket for valve dia. 18/10 x 1,5	0.006				2	2356-123
83M-1	Filter complete					1	4522-002
83M-2	Insert for filter					1	3425-097
83N-1	Solenoid valve without coil	0.688				1	1372-423
83S-1	Coil 220/230V, 50/60Hz, 10W	0.260					1372-537
83S-2	Coil 110V, 50/60Hz, 10W	0.260					1372-538
83S-3	Coil 240V, 50Hz, 10W	0.260					1372-539
83P-1	Injection valve TEAT 20-5 - R22	2.460				1	1371-242
83P-2	Injection valve TEAT 20-5 - R717	2.460				1	1371-240
	Spec. spring for 83P-2	0.018				1	1523-070
83Q-1	Solenoid valve for by-pass, without coil	0.822				1	1372-423
83T-1	Coil 220/230V, 50/60Hz, 10W	0.260					1372-537
83T-2	Coil 110V, 50/60Hz, 10W	0.260					1372-538
83T-3	Coil 240V, 50Hz, 10W	0.260					1372-539
83R-1	Non-return valve for discharge pipe	2.958				1	1372-249

Pos.	Designation	Weight each in kg	Number each compressor				Part no.
			CMO 24	CMO 26	CMO 28	TCMO 28	
	Side cover with solenoid valves for capacity control						
86A-1	Side cover with oil level glass	10.760	1	1	1	1	3113-134
86B-1	Gasket for side cover	0.014	1	1	1	1	2353-102
86C-1	Hexagon head screw M12 x 65	0.070	10	10	10	10	1424-059
86D-1	Hexagon head screw M12 x 75	0.078	2	2	2	2	1424-061
86E-1	Oil level glass	0.230	1	1	1	1	1226-015
86F-1	O-ring for oil level glass, dia. 52,07 x 2,62	0.002	1	1	1	1	1331-140
86G-1	Hexagon head screw M6 x 18	0.006	4	4	4	4	1424-148
86H-1	Valve body with 3 solenoid valves, without coils	3.690	1	1	1	1	3143-413
86X-1	Coil 220/230V, 50/60Hz, 10W	0.260					1372-537
86X-2	Coil 110V, 50/60Hz, 10W	0.260					1372-538
86X-3	Coil 240V, 50Hz, 10W	0.260					1372-539
86Y	Solenoid valve - Service kit for one solenoid valve	3.690					1372-424
86J-1	Gasket for valve body	0.010	1	1	1	1	2353-185
86J-2	Gasket for valve body for ex-exelution	0.010	1	1	1	1	2353-188
86K-1	Hexagon head screw M8 x 70	0.030	4	4	4	4	1424-042
86N-1	Washer dia. 24/13 x 2,5	0.006	12	12	12	12	1436-036
86P-1	Plug connector for coils		3	3	3	3	1372-545
86Q-1	Valve for prelubrication		1	1	1	1	2412-585
86R-1	Nut		1	1	1	1	2313-045
86s-1	Special joint		1	1	1	1	2334-027
86T-1	Cap		1	1	1	1	2313-027
86U-1	Joint 3/8"		1	1	1	1	1349-053
86V-1	Alu-gasket		1	1	1	1	2356-123
	Side cover for unloading start						
86A-1	Side cover with oil level glas	10.760	1	1	1	1	3113-134
86B-1	Gasket for side cover	0.014	1	1	1	1	2356-102
86C-1	Hexagon head screw M12 x 6	0.070	10	10	10	10	1424-059
86D-1	Hexagon head screw M12 x 75	0.078	2	2	2	2	1424-061
86E-1	Oil level glas	0.230	1	1	1	1	1226-015
86F-1	O-ring dia. 52,07 x 2,62	0.002	1	1	1	1	1331-140
86G-1	Hexagon head screw M6 x 18	0.006	4	4	4	4	1424-149
87K-1	Cover for unloading start	0.805	1	1	1	1	3143-187
87L-1	Gasket for cover	0.008	1	1	1	1	2353-149
87M-1	Hexagon head screw M8 x 35	0.016	4	4	4	4	1424-170

Pos.	Designation	Weight each in kg	Number each compressor				Part no.
			CMO 24	CMO 26	CMO 28	TCMO 28	
86N-1	Washer dia. 24/13 x 2,5	0.006	12	12	12	12	1436-036
86Q-1	Valve for prelubrication		1	1	1	1	2412-585
86R-1	Nut		1	1	1	1	2313-045
86S-1	Special joint		1	1	1	1	2334-027
86T-1	Cap		1	1	1	1	2313-027
86U-1	Joint 3/8"		1	1	1	1	1349-053
86V-1	Alu-gasket		1	1	1	1	2356-123
	Intermediate pressure connection Only for TCMO with ex. system						
90A-1	IP champer R22					1	3114-100
90A-2	IP champer R717					1	3114-101
90B-1	IP pipe					1	3114-102
90C-1	Filter strainer					1	2464-232
90D-1	O-ring					2	1331-019
90E-1	Flange for cover					1	
90F-1	Insert for cover					1	
90H-1	O-ring					1	1331-024
90H-1	Screw					4	1424-191
90J-1	Gasket					1	2353-180
90K-1	Screw					4	1424-194
90L-1	Nut					4	1432-064
90M-1	Washer					8	1436-035
	Oil return with solenoid valve Only for CMO with HFC/HCFC						
94A-1	Cover against oil separator		1	1	1		4241-229
94B-1	O-ring dia. 82,15 x 3,5	0.004	1	1	1		1331-077
94C-1	Hexagon head screw M8 x 18	0.012	8	8	8		1424-164
94D-1	Spring washer	0.006	8	8	8		1437-054
94E-1	Straight screw-in joint GE 6-SR 1/4"	0.054	1	1	1		1349-124
94F-1	Stop valve BML 6	0.280	1	1	1		1374-050
94G-1	Straight screw-in joint GE 10-LR 1/4"	0.048	1	1	1		1349-051
94H-1	Filter	0.054	1	1	1		4522-002
94J-1	Straight screw-in joint GE 8-LR 1/4"	0.044	1	1	1		1349-050
94K-1	Welding nipple	0.018	1	1	1		2322-032
94L-1	Gasket	0.006	2	2	2		2356-123
94M-1	Nozzle 0,6 mm	0.002	1	1	1		3142-035
94N-1	Union nut	0.080	1	1	1		2313-006
94P-1	Bushing G 1/4" x G 1/2"	0.072	1	1	1		2312-013

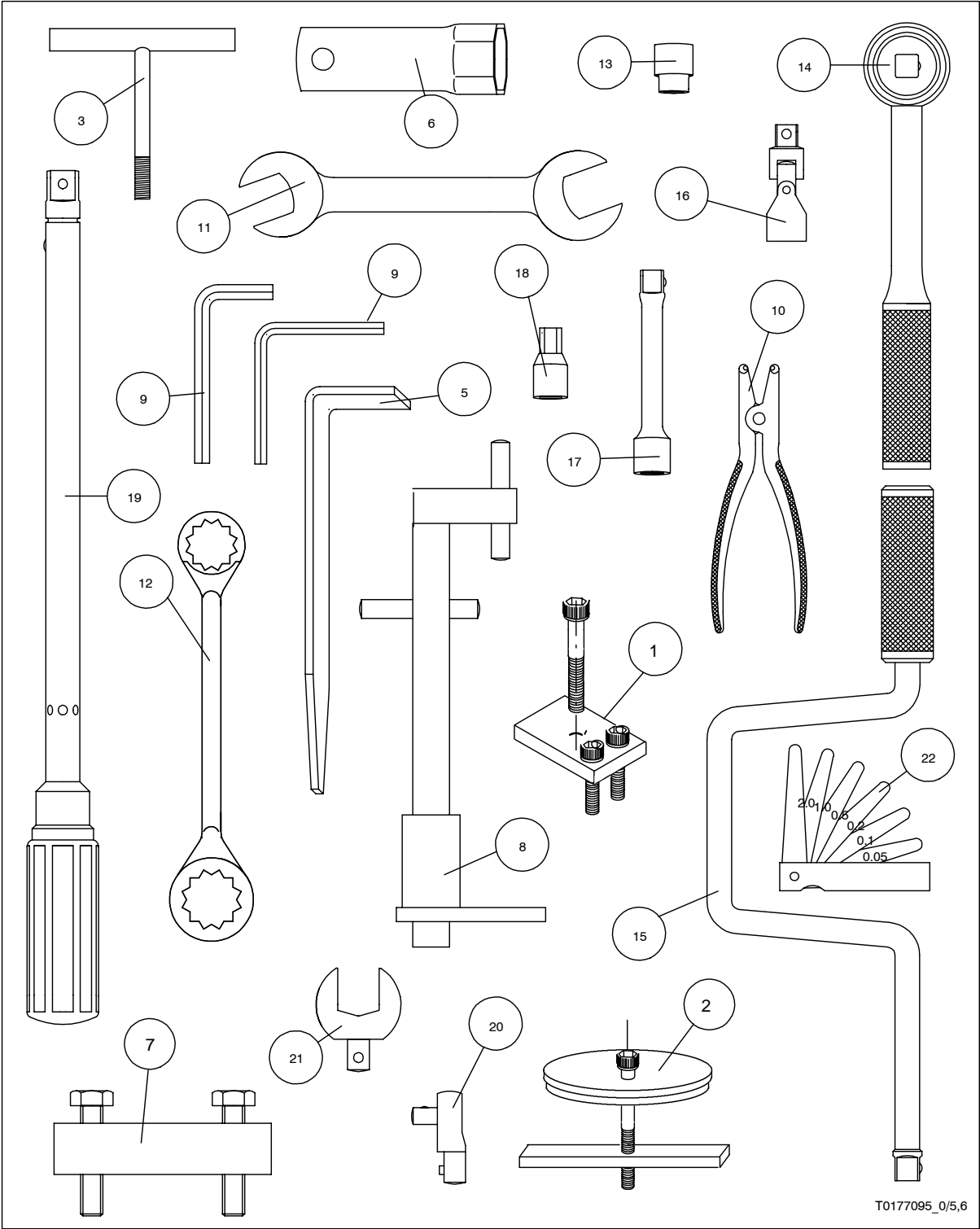
Pos.	Designation	Weight each in kg	Number each compressor				Part no.
			CMO 24	CMO 26	CMO 28	TCMO 28	
94Q-1	Angle swivel screw-in joint 1/4" NPT	0.120	2	2	2		1349-089
94R-1	Straight screw-in joint GE 8-LR 1/4"	0.020	1	1	1		1349-106
94S-1	Solenoid valve without coil	0.624	1	1	1		1372-422
94U-1	Coil 220/230V, 50/60Hz, 10W	0.260					1372-537
94U-2	Coil 110V, 50/60Hz, 10W	0.260					1372-538
94U-3	Coil 240V, 50Hz, 10W	0.260					1372-539
94T-1	Screw-in joint 1/4" NPT for dia. 10	0.046	1	1	1		1349-060
	Oil return with solenoid valve Only for CMO with R717						
94A-2	Cover against oil separator		1	1	1		3254-066
94B-2	Gasket for cover	0.020	1	1	1		2355-105
94C-2	Hexagon head screw M12 x 30	0.042	6	6	6		1424-215
94D-2	Straight screw-in joint	0.102	1	1	1		1349-089
94E-2	Nipple	0.044	1	1	1		2334-024
94F-2	Union nut	0.080	2	2	2		2313-006
94G-2	Gasket for nipple/valve	0.006	4	4	4		2356-123
94H-2	Stop valve		1	1	1		2413-010
94J-2	Welding nipple	0.018	1	1	1		2322-032
94K-2	Angle swivel screw-in joint G 1/4"	0.098	2	2	2		1349-087
94L-2	Filter complete		1	1	1		4522-002
94M-2	Nozzle 0,5 mm	0.002	1	1	1		3142-034
94P-2	Nipple G 1/4" x G 1/2"	0.082	1	1	1		2311-040
94Q-2	Straight screw-in joint 1/4" NPT	0.042	1	1	1		1349-056
94S-2	Solenoid valve without coil	0.624	1	1	1		1372-422
94U-1	Coil 220/230V, 50/60Hz, 10W	0.260					1372-537
94U-2	Coil 110V, 50/60Hz, 10W	0.260					1372-538
94U-3	Coil 240V, 50Hz, 10W	0.260					1372-539
	Oil return with solenoid valve Only for TCMO with R717 and HFC/HCFC						
94A-3	Cover against oil separator					1	
94B-3	O-ring dia. 91,67 x 3,53	0.004				1	1331-080
94C-3	Hexagon head screw M12 x 40	0.046				4	1424-217
94D-3	Spring washer 20,2/12,2 x 2,5	0.004				4	1437-081
94E-3	Angle swivel screw-joint	0.102				1	1349-087
94F-3	Nipple	0.044				1	2334-024
94G-3	Union	0.080				3	2313-006
94H-3	Gasket for nipple/valve	0.006				4	2356-123
94J-3	Welding nipple	0.018				2	2322-032

Pos.	Designation	Weight each in kg	Number each compressor				Part no.
			CMO 24	CMO 26	CMO 28	TCMO 28	
94K-3	Angle swivel screw-in joint G 1/4"	0.098				2	1349-087
94L-3	Filter complete					1	4522-002
94M-3	Nipple G 1/4" x G 1/2"	0.082				1	2311-040
94N-3	Gasket dia. 19/14 x 1,5	0.004				2	2356-124
94P-3	Nozzle 0,4 mm - only for R717	0.002				1	3142-033
94P-3	Nozzle 0,5 mm - only for HFC/HCFC	0.002				1	1342-034
94Q-3	Straight screw-in joint 1/4" NPT	0.042				2	1349-056
94S-3	Solenoid valve without coil	0.624				1	1372-422
94U-1	Coil 220/230V, 50/60Hz, 10W	0.260					1372-537
94U-2	Coil 110V, 50/60Hz, 10W	0.260					1372-538
94U-3	Coil 240V, 50Hz, 10W	0.260					1372-539
94	Stop valve					1	2413-010
	Oil return with float valve Only for CMO with HFC/HCFC						
95A-1	Cover against oil separator	0.626	1	1	1		3411-007
95B-1	O-ring dia. 82,15 x 3,5 for 95A	0.004	1	1	1		1331-077
95C-1	Hexagon head screw M8 x 18	0.012	8	8	8		1424-164
95D-1	Sprig washer	0.006	8	8	8		1437-054
95E-1	Float valve complete	0.200	1	1	1		1374-505
95F-1	Distance ring dia. 10/8 x 8	0.002	1	1	1		2212-036
95G-1	Hexagon head screw M5 x 35	0.006	2	2	2		1413-334
95H-1	Angle swivel G 1/4" for dia. 6		1	1	1		1349-092
	Oil return with float valve Only for CMO with R717						
95A-2	Cover against oil separator		1	1	1		4512-003
95B-2	Gasket for cover		1	1	1		2355-108
95C-2	Filter		1	1	1		3425-077
95D-2	Hexagon head screw M12 x 30		6	6	6		1424-215
95E-2	Angle swivel screw-in joint		2	2	2		1349-092
	Oil return with float valve Only for TCMO with R717 and HFC/HCFC						
95A-3	Cover with float valve					1	4512-004
95B-3	O-ring dia. 91,67 x 3,53	0.004				1	1331-080
95C-3	Hexagon head screw M12 x 40	0.046				4	1424-217
95D-3	Spring washer dia. 20,2/12,2 x 2,5	0.004				4	1437-081
95E-3	Angle swivel screw-in joint					2	1349-092

Pos.	Designation	Weight each in kg	Number each compressor				Part no.
			CMO 24	CMO 26	CMO 28	TCMO 28	
	Thermopump						
98A-1	Side cover for thermopump		1	1	1	1	3113-133
98B-1	Monitor box		1	1	1	1	1553-215
	Allen screw		2	2	2	2	1412-204
	Spring washer		4	4	4	4	1437-020
98C-1	Level indicator		2	2	2	2	3185-038
98D-1	Outer part for level indicator		2	2	2	2	3185-034
98E-1	Washer dia. 20/13 x 1,5 Al		3	3	3	3	2356-125
98F-1	Rubber cap		2	2	2	2	1554-194
98G-1	Solenoid valve without coil		1	1	1	1	1372-422
98H-1	Solenoid valve without coil		1	1	1	1	1372-423
98AB-1	Coil 220/230V, 50/60Hz, 10W	0.260					1372-537
98AB-2	Coil 110V, 50/60Hz, 10W	0.260					1372-538
98AB-3	Coil 240V, 50Hz, 10W	0.260					1372-539
98K-1	Check valve		2	2	2	2	1364-008
98M-1	VA-joint with nozzle 0,6 mm					1	2314-100
	Plug connector for coils		1	1	1	1	1372-490
98M-2	VA-joint with nozzle 1,2 mm		2	3	4		2314-097
	Bracket for stop valve		1	1	1	1	2213-085
	Allen screw M4 x 12		2	2	2	2	1412-203
	Cable binder		1	1	1	1	1554-053
	Straight joint 10 mm		1	1	1	1	1349-051
	T-joint 10 mm		2	3	4	1	1349-041
	Straight joint 6 mm		3	3	3	3	1349-006
	Socket 10 mm NPT		1	1	1	1	1349-101
	Angle swivel joint 10 mm BSP		1	1	2	1	1349-177
	Angle joint 10 mm		2	2	2	2	1349-089
	Angle swivel joint 6 mm					1	1349-092
	Angle joint 10 mm		1	1	2	1	1349-033
	Reducing socket 3/8" - 1/4"		1	1	1		1349-076
	Straight joint 10 mm NPT		2	2			1349-060
	Angle socket 10 mm		1				1349-112
	Washer 18/10 x 1,5 Al		2	2	2		2356-123
	Washer 25/17 x 1,5 Al		1	1	1		2356-130
	Washer 19/14 x 1,5 Al		2	2	2	2	2356-124
	Spring washer for M12		1	1	1		1437-026
	Plug			1	1		2314-048
	Pipe for pressure equalizing		1	1	1		3185-033

Pos.	Designation	Weight each in kg	Number each compressor				Part no.
			CMO 24	CMO 26	CMO 28	TCMO 28	
98N-1	Filter		1	1	1	1	4522-002
98P-1	Stop valve		1	1	1	1	2412-277
98Q-1	Cooling cover		1	1	1	1	3113-171
98R-1	Washer dia. 29/21 x 1,5 Al		2	2	2	2	2356-136
98S-1	Gasket for side cover		1	1	1	1	2353-101
98T-1	Hexagon head screw M12 x 75		14	14	14	14	1424-061
	Socket 1/4"		1	1	1	1	1349-101
98U	Solenoid valve without coil						1372-423
98V	Solenoid valve without coil		1	1	1		1372-423
98AB-1	Coil 220/230V, 50/60Hz, 10W	0.260	1	1	1	1	1372-537
98AB-2	Coil 110V, 50/60Hz, 10W	0.260					1372-538
98AB-3	Coil 240V, 50Hz, 10W	0.260					1372-539
98X	PT100 sensor		1	1	1	1	1373-253
98Y	Stop valve		1	1	1	1	2412-277
98Z	Non-return valve		1	1	1	1	1364-022
98AA	Screw joint		1	1	1	1	2314-105
	UNISAB						
99A-1	Support for UNISAB		1	1	1	1	2213-500
99B-1	Distance washers		4	4	4	4	2212-130
99C-1	Screw for support M10 x 20		2	2	2	2	1424-190
99D-1	Screw for UNISAB M6 x 20		4	4	4	4	1424-152
99E-1	Washers dia. 22/7		4	4	4	4	1436-025

Tools for compressor CMO 24-26-28 Mk2 & TCMO 24-26-28 Mk2



Tools for compressor CMO and TCMO

Line no. A600 = Normal set

Line no. A601 = Extended set

Line no. A602 = Tools for coupling AMR

Line no. A603 = Tools for alignment of flexible coupling

Pos no	Designation	Dim	Part no	Line no A600	Line no A601	Line no A602	Line no A603
1	Clamp with screw		3183-141	4	4		
2	Tools for shaft seal		3183-139	1	1		
3	Tommy screws for cyl. liners		3183-041	2	2		
5	Supporting plate for pistons		3181-114	8	8		
6	Spanner for heating cartridge	JV55	3183-060	1	1		
7	Puller for coupling or belt pulley		3183-058	1	1		
8	Adjustment jig for coupling		3183-104				1
9-1	Wrench for socket cap screw	JV2			1		
9-2	Wrench for socket cap screw	JV3			1		
9-3	Wrench for socket cap screw	JV4			1		
9-4	Wrench for socket cap screw	JV5			1		
9-5	Special wrench for shaft seal		1612-392		1		
10	Retaining ring pliers	J21			1		
11-1	Ring and open spanner	JV10	1612-392		1		
11-2	Ring and open spanner	JV13			1		
11-3	Ring and open spanner	JV17			1		
11-4	Ring and open spanner	JV27			1		
12-1	Ring spanner	JV6X7			1		
12-2	Ring spanner	JV8X9			1		
13-1	Socket wrench	JV10			1		
13-2	Socket wrench	JV13			1		
13-3	Socket wrench	JV17			1		
13-4	Socket wrench	JV19			1		
13-5	Socket wrench	JV22			1		
13-6	Socket wrench	JV24			1		
13-7	Socket wrench	JV1/2			1	1	
14	Ratchet handle				1		
15	Speed handle				1		
16	Universal joint for socket wrench				1		

Pos no	Designation	Dim	Part no	Line no A600	Line no A601	Line no A602	Line no A603
17-1	Extension rod for socket wrench				1		
17-2	Extension rod for socket wrench				1		
18	Screw driver socket				1		
19-1	Torque wrench 15-90 Nm				1	1	
19-2	Torque wrench 40-200 Nm				1		
20	Coupler for torque wrench				1	1	
21	Open spanner for torque wrench	JV1/2			1	1	
22	Feeler gauge						1